

Absolute Max. Ratings		Min.	Max.	Unit
V_{iL}	Input Low Voltage		1.08	V
V_{iH}	Input High Voltage	2.1		V
V_{oL}	Output Low Voltage		0.4	V
V_{oH}	Output High Voltage	2.4		V

MOXA HWDC

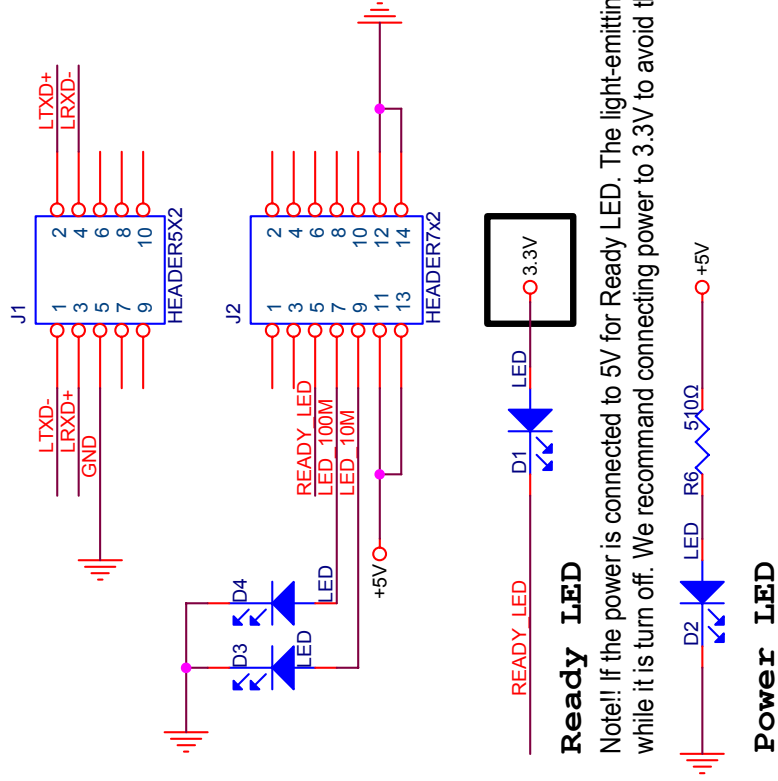
Title

For NE-4110S

Size A Document Number

DIO

Date: 星期四, 五月 20, 2004

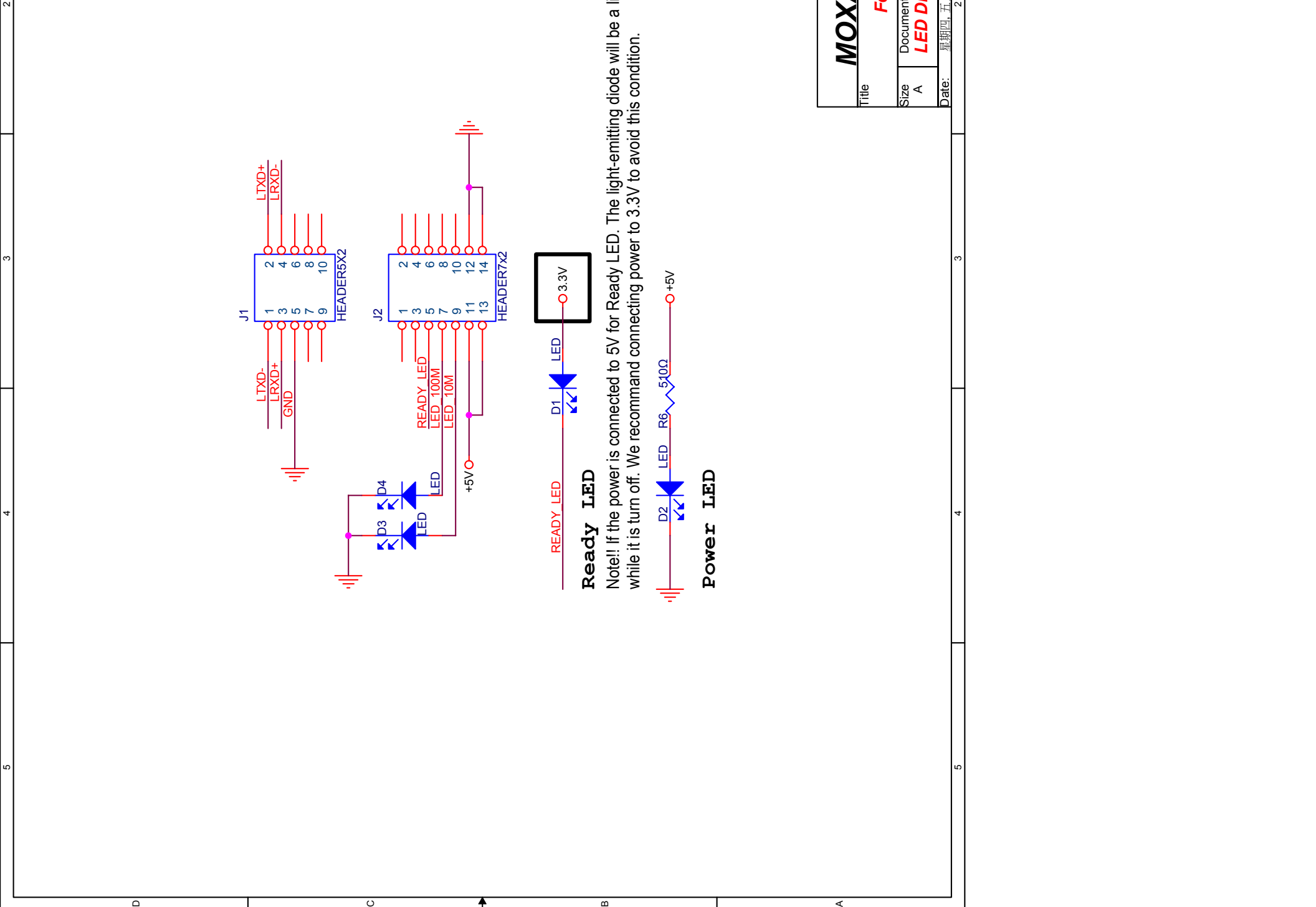


Ready LED

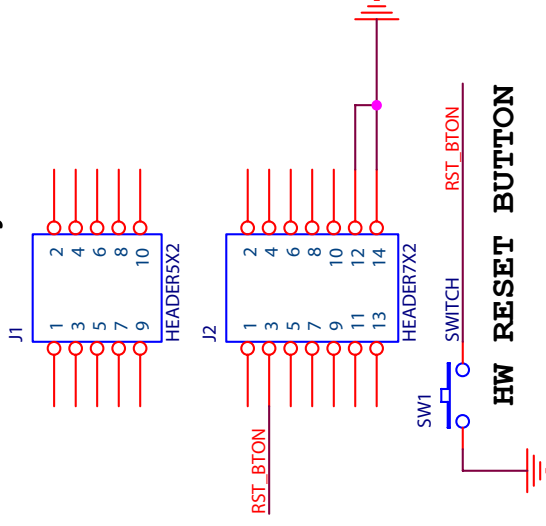
Note!! If the power is connected to 5V for Ready LED. The light-emitting diode will be a little luminous while it is turn off. We recommend connecting power to 3.3V to avoid this condition.

Power LED

MOXA HWDC	
Title	For NE-4110S
Size	Document Number
A	LED Display
Date:	星期四, 五月 20, 2004



While push this button, the NE-4110A/S terminates all operation immediately and restarts the system.



Title

MOXA HWDC

Size

A

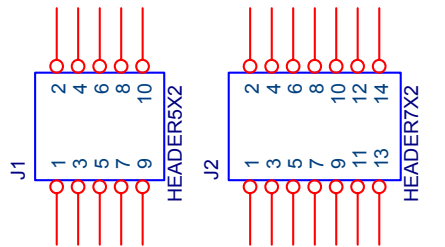
Document Number

For NE-4110S

Reset System

Date:

星期四, 五月 20, 2004

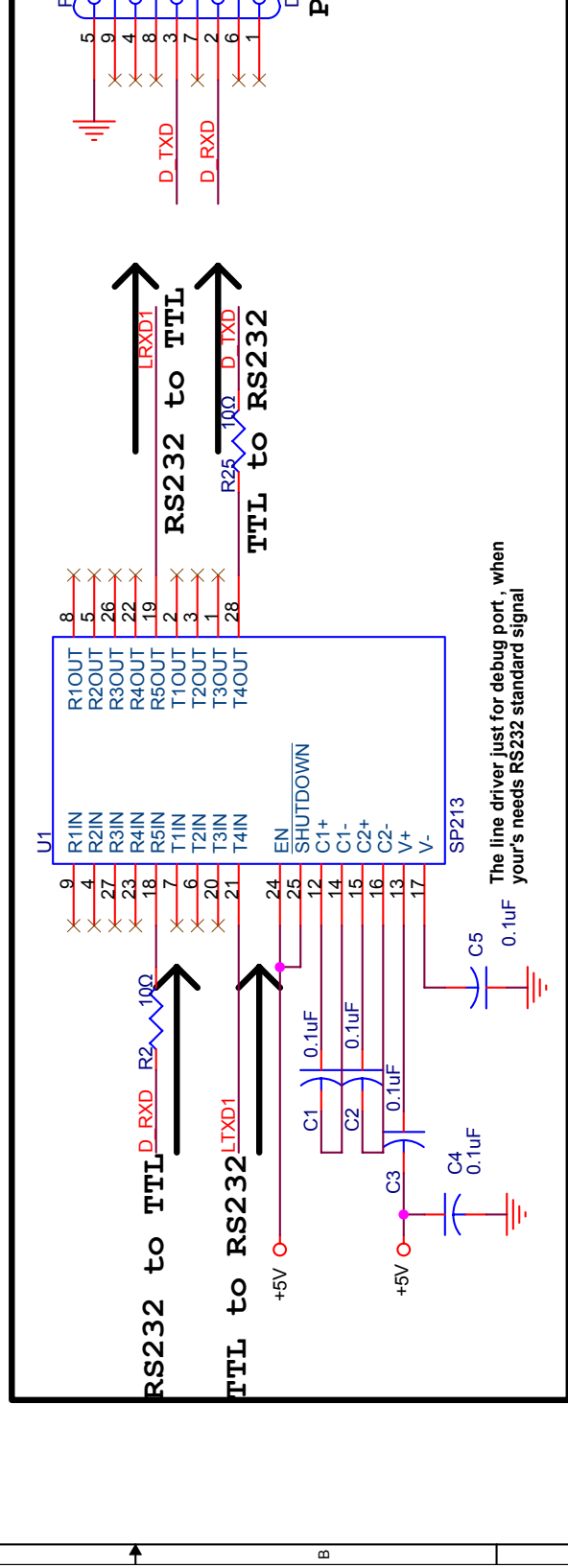
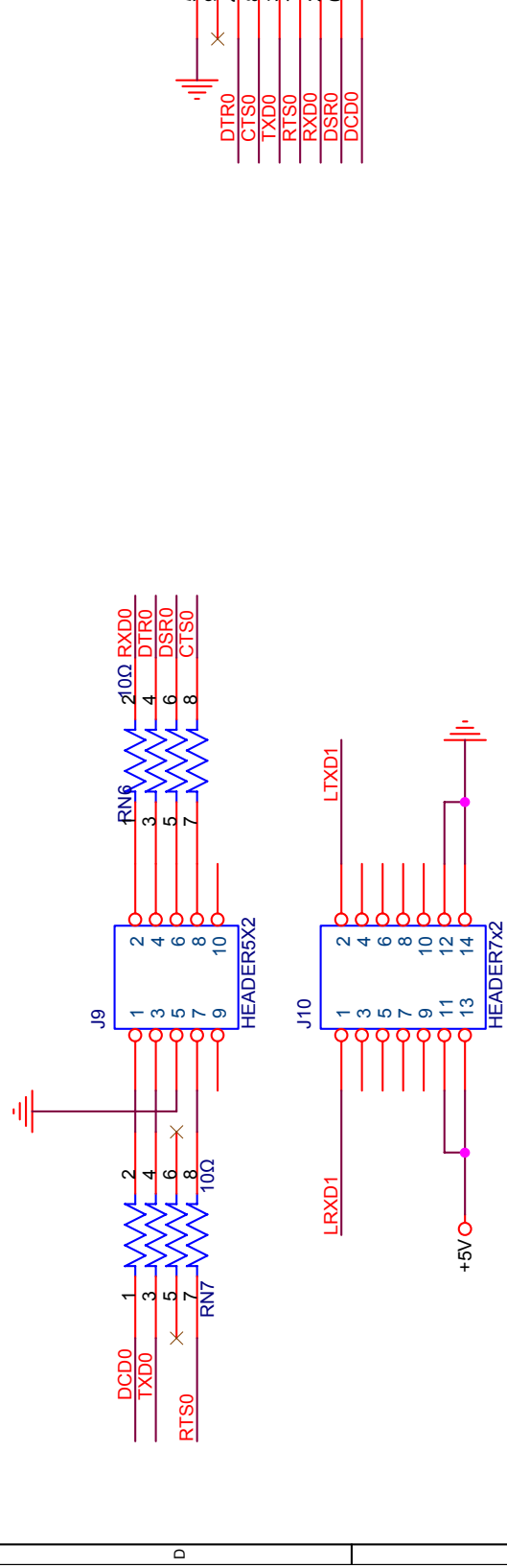


2.54x2.54 mm

MOXA HWDC	
Title	For NE-4110S
Size	Document Number
A	Pitch of Header
Date:	星期四, 五月 20, 2004

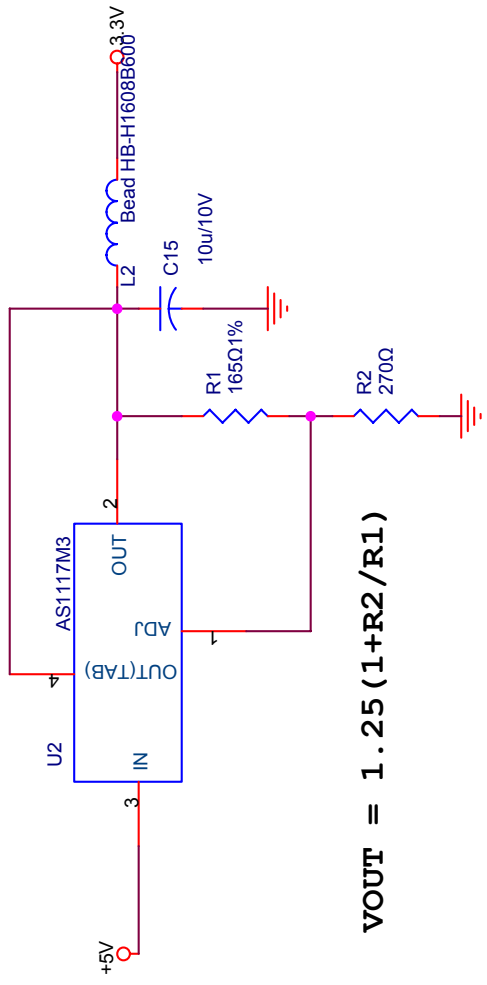
2
3
4
5

2
3
4
5



MOXA HWDC	
Title	For NE-4110S
Size	Document Number
A	Line Driver & Conne
Date:	星期五, 五月 21, 2004

This linear regulator is only for Ready LED to avoid radiating little light while it



MOXA HWDC	
Title	For NE-4110S
Size	Document Number
A	Linear Regulator
Date:	星期四, 五月 20, 2004

2
3
4
5

2
3
4
5